

Gift Show Select

～The List of companies interested in exploring～

The 100th Tokyo International Gift Show Autumn 2025

LIFE×DESIGN 18th Edition by Tokyo International Gift Show

The 38th Gourmet Show Autumn 2025

Dates : **September. 3^{WED} 4^{THU} 5^{FRI}, 2025**

Venue : **Tokyo Big Sight**

Our other shows & projects :



Seto Business Match Making Program
～ Japanese Ceramic Products ～

Gift Show Select Sample

Booth No.

Company Name

Product Name

Retail Price

Product Description

Web : <https://www.giftshow.co.jp/english/tigs/>

Language Availability : Japanese

Agent : 【INCLUSIVE : EXCLUSIVE : 】

Export Record : MORE THAN 3 YEARS

Export Destination : Japan

Contents

STATIONERY	P04
TOY & CHARACTER GOODS	P07
KITCHEN & CERAMIC	P09
INTERIOR & DÉCOR	P13
FASHION & ACCESSORY	P17
HEALTH & BEAUTY	P23
FOOD & BEVERAGE	P25
OTHER	P27

STATIONERY



WEST2-T15-03

Amina Collection CO., LTD.

Handmade Calendars

\$ Approx. 8.5 – 14.0 (vary depending on the design)

Japanese Aesthetics × Himalayan Craft

Made from Himalayan Lokta bark, this handmade paper has been crafted the same way for 1,000+ years. Strong, insect-resistant, and smooth to write on. Kaya's Handmade Paper Calendar features original Japan-themed designs, handmade in Nepal—from papermaking to painting. Size & price vary. JPY 1,200–2,000 (US\$8.5–14)

Web: <https://www.ametsuchicollection.com/pages/wholesale>

Language Availability: English, Japanese

Agent: ☐ No ☐ INCLUSIVE: ☐ No ☐ EXCLUSIVE: ☐ No]

Export Record: MORE THAN 3 YEARS

Export Destination: Asia, North America, Europe



WEST3-T38-04-B

BAMBOO+®/Think Scrap/TOKAIRIKA CO., LTD.

Upcycled Seatbelt Pen Case

\$ 30

Crafted from surplus seatbelt material from automotive factories, this pen case by Think Scrap—a sustainable brand from Tokai Rika—offers exceptional durability and flexibility. Carefully sewn in Japan, it holds a 150mm ruler and multiple pens despite its slim profile. Each piece is one-of-a-kind, featuring unique colors and weaves from different car models. Smooth YKK zipper included.

Web: <https://www.thinkscrap.jp/>

Language Availability: Japanese and simple English

Agent: ☐ No ☐ INCLUSIVE: ☐ No ☐ EXCLUSIVE: ☐ No]

Export Record: NONE

Export Destination:



WEST1-T01-09

David Howell & Company

Metal Bookmarks, Metal Earrings

\$ 25

David Howell & Company, based in NY, produces art-inspired bookmarks sold in over 500 museum stores worldwide. Praised by the Metropolitan Museum as creating “the most beautiful bookmark in the world,” the brand is renowned for its exceptional craftsmanship and design. Its custom production expertise also has earned lasting trust from museums globally.

Web: <https://davidhowell.com/>

Language Availability: English

Agent: ☐ No ☐ INCLUSIVE: ☐ No ☐ EXCLUSIVE: ☐ No]

Export Record: 1–3 YEARS

Export Destination: CHINA, TAIWAN, MALAYSIA



EAST6-T29-46

Kamiiso Sansyo Co.,Ltd

Kimono-Beauty Masking tape 15mm × 7m

\$ 4.7

The design concept is "Japanese tradition in this one". Using washi with a gentle texture, and gradation foil expresses Japanese beautiful kimono patterns and traditional Japanese patterns. There are a variety of patterns available, and new products are released regularly. There is also a 25mm width version.

Web : <https://www.kamiiso.co.jp/>

Language Availability: English

Agent: ☒ Yes ☐ INCLUSIVE: ☒ Yes ☐ EXCLUSIVE: ☐ No ☐]

Export Record: MORE THAN 3 YEARS

Export Destination: USA, CHINA, KOREA, TAIWAN, FRANCE, GERMANY, AND MORE



EAST6-T30-46

OKUYAMA & CO., LTD.

WASHI STICKERS

\$ 1.7

WASHI PAPER STICKERS WITH GOLD FOILS. JAPANESE-STYLE DESIGNS ARE VERY POPULAR WITH PEOPLE ALL OVER THE WORLD.

Web : <https://www.stickerfun.co.jp/english/english-front.html>

Language Availability: English

Agent: ☐ No ☐ INCLUSIVE: ☐ No ☐ EXCLUSIVE: ☐ No ☐]

Export Record: MORE THAN 3 YEARS

Export Destination: USA, KOREA, AUSTRALIA, HONG KONG, THAILAND, UNITED ARAB EMIRATES



EAST6-T28-44

Loukin

Magnetic Marker Holder/Large

\$ 13.99

Made from durable, eco-conscious recycled ABS plastic, it keeps space tidy. With powerful magnets and strong adhesive, it sticks to any surface – whiteboards, fridges, walls. Perfect for organizing pens, markers, and small tools in offices, classrooms, or kitchens. Simplify your space effortlessly!

Web : <https://www.loukin.com>

Language Availability: Japanese, English, Chinese

Agent: ☐ No ☐ INCLUSIVE: ☐ No ☐ EXCLUSIVE: ☐ No ☐]

Export Record: MORE THAN 3 YEARS

Export Destination: USA



WEST1-AC-08

SUGAI WORLD

Stationery made of special paper

\$ 7.99

Made in Japan from FSC-certified paper, our playfully designed stationery items are sold in museum stores, stationery stores, and bookstores in more than 20 countries. Introducing the new series of the best-selling Clip Family paper clips, which celebrates its 10th anniversary this year.

Web : <https://sugaiworld.com/>

Language Availability: English, French

Agent: ☐ No ☐ INCLUSIVE: ☐ No ☐ EXCLUSIVE: ☐ No ☐]

Export Record: MORE THAN 3 YEARS

Export Destination: USA, UK, FRANCE, SWISS, GERMANY, ITALY, HONG KONG, ETC.



WEST3-T37-12

**Toyooka Chamber of Commerce and Industry /
LAPIS Japan Co.,Ltd**

dashoes 【極】KIWAMI

\$ 18

1.Eliminate stinky smell of shoes in 3 seconds.2.Harmless to people and pets.3.Can be used for all shoes.4.fragrance-free5.No alcohol6.natural ingredient6.OEM available

Web : <http://laps-japan.com/124801248312471125171254012474-26997.html>

Language Availability: ENGLISH

Agent: 【 INCLUSIVE: EXCLUSIVE: 】

Export Record: LESS THAN 1 YEAR

Export Destination: SINGAPORE

TOY & CHARACTER GOODS



SOUTH1-T01-22

Ekimelo (Station Melody) Keychain

Ekimelo (Station Melody) Keychain

\$ 14

The Station Melody Keychain plays real train departure melodies from Japan. Loved by railway fans, families, and tourists alike, it brings back memories of travel through sound. Compact and collectible, it's perfect as a unique souvenir or gift.

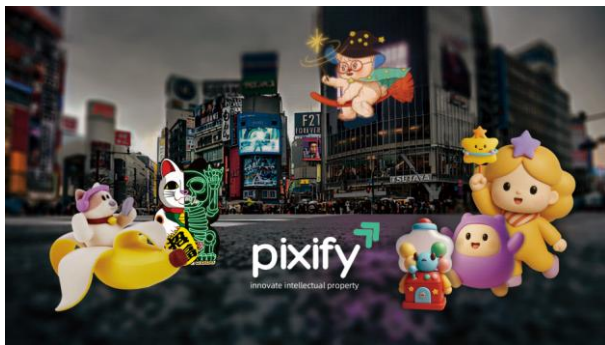
Web : <https://japanista.jp/>

Language Availability : English, Japanese

Agent : ☐ No 【 INCLUSIVE : ☐ No EXCLUSIVE : ☐ No 】

Export Record : LESS THAN 1 YEAR

Export Destination : United States, Canada, Taiwan, Singapore, United Kingdom, Hong Kong, South Korea, Australia, Germany, Spain, Italy, France, Austria, and the Philippines.



EAST8-T43-28

pixify/AL DE NAIDE., INC.

Figurines & Plush-Toys, etc.

\$US\$8- ~ US\$50-

Pixify is a character IP company focused on licensing—first growth through toys, content, and collaborations. Our product range includes blind boxes, plush toys, fashion items, lifestyle goods, and digital experiences. Working with global creators and a seasoned IP team, Pixify turns original characters into globally loved brands.

Web : <http://www.arunai.co.jp>

Language Availability : English, Japanese & Chinese

Agent : ☐ No 【 INCLUSIVE : ☐ No EXCLUSIVE : ☐ No 】

Export Record : MORE THAN 3 YEARS

Export Destination : USA



EAST7-T33-16

Skater

Plastic Strow Bottle

\$ 15.00

Skater is producing and selling many kind of products with various characters. We are in strong position especially in outdoor products such as lunch box, water bottle and so on. We have also experiences to export the products to foreign countries.

Web : <https://skater.co.jp/en/>

Language Availability : English

Agent : ☒ Yes 【 INCLUSIVE : ☒ Yes EXCLUSIVE : ☐ No 】

Export Record : MORE THAN 3 YEARS

Export Destination : USA, France, Taiwan, Korea, Singapore



EAST7-T33-60

STALLION JAPAN LTD.

License General Product and Sport Toy
\$ NIK(ASK)

- FIFA – World Cup 2026 official licenses(Ask)
 - Disney Brands
 - General merchandise, outdoor and marine goods, toys in general, kids skaters, winter products
- Marvel & Adventure
- Various toys, sports toys, gym goods, outdoor series, skaters, travel goods, etc.
- Discovery Adventure
- Outdoor, travel goods, marine goods, variety goods
 - Astom Martin and Lamborghini Brands
 - Soccer Ball, Skater boards, basketballs, bicycles, helmets

Web :

Language Availability: English, Chinese, Japanese

Agent: ☒ Yes ☐ INCLUSIVE: ☒ Yes ☐ EXCLUSIVE: ☐ No ☐]

Export Record: MORE THAN 3 YEARS

Export Destination: Asia Countries (South Middle Est)



WEST3-T31-02

TectecmoSHOP

TOYHON (Play using fingers)
\$ 70

Handmade in Japan, “Toihon” is a high-quality fabric book for infants, designed to nurture sensory and imaginative play. With durable stitching and rich interactive features—zippers, buttons, strings, and pockets—it offers a safe, engaging experience. Ideal as a special gift, it stands apart as a customizable, story-rich learning tool.

Web : <https://tectecmo.raku-uru.jp/>

Language Availability :

Agent: ☐ No ☐ INCLUSIVE: ☐ No ☐ EXCLUSIVE: ☐ No ☐]

Export Record: NONE

Export Destination :

KITCHEN & CERAMIC



WEST4-T49-12

CERAMIC AI CO., LTD.

Matcha Bowl Chasen Chaspoon Set

\$ 35 –

Experience the elegance of Japanese tea ceremony culture with this traditional matcha bowl set. The set includes a chasen (bamboo whisk) and chaspoon (matcha spoon). Featuring a refined floral design that reflects Japanese aesthetics, it comes in a gift box—perfect as a souvenir or thoughtful gift for those seeking a taste of real Japan.

Web : <https://ceramic-ai.co.jp/>

Language Availability: ENGLISH

Agent: ☐ No ☒ INCLUSIVE: ☐ No ☒ EXCLUSIVE: ☐ No ☒]

Export Record: MORE THAN 3 YEARS

Export Destination: CHINA, KOREA, TAIWAN



WEST1-T07-19

BLANCHE ASSOCIES INC.

Oriental Modern Teapot

\$ 41

The stainless steel construction is hygienic and resistant to stains and aromas. The tea strainer is made in a factory with a history of more than 100 years, where craftsmen carefully produce each cup by hand through dozens of processes. The handle is easy to hold and the small size makes it easy for women and people of all ages to pour with one hand.

Web : <https://blan.jp/blogs/om/om-1>

Language Availability:

Agent: ☐ No ☒ INCLUSIVE: ☐ Yes ☒ EXCLUSIVE: ☐ No ☒]

Export Record: MORE THAN 3 YEARS

Export Destination: USA, France, Hong Kong, Macau, Dubai



WEST3-T31-01

fukubekaji.inc

Fukube VG10 Damascus Santoku Knife 165mm

\$ OPEN

This is a handmade utility knife crafted by skilled artisans. We have paid particular attention to the materials used to ensure it will last for many years. The high-grade steel VG10, which is both hard and highly sharpenable, is sandwiched between layers of stainless steel, making it rust-resistant and ensuring that it will remain sharp for a long time.

Web : <https://fukubekaji.jp/>

Language Availability: English

Agent: ☐ No ☒ INCLUSIVE: ☐ No ☒ EXCLUSIVE: ☐ No ☒]

Export Record: 1-3 YEARS

Export Destination: USA, Denmark, Netherlands, Thailand



EAST4-T06-38

H.Kasai Co., Ltd.

Tempura Lid

\$ 160

When food fried w/o lid, H₂O in food is lost by evaporation w. big latent ENG (Ca.590cal/g). With TEMPRA LID, created "Steam Lid" covers food keeping right cooking temp. (100°C) & humid. (100%). It prevents loss of H₂O in food & latent ENG. It is forwarded for heating food itself. It offers plump/juicy inside & crispy outside food. Less ENG & cooking time.

Web : <https://eurokitchen.jp>

Language Availability: English, German, Japanese

Agent: ☐ No ☒ INCLUSIVE: ☐ No ☐ EXCLUSIVE: ☐ No]

Export Record: LESS THAN 1 YEAR

Export Destination: DENMARK



WEST3-T36-02

MASUDA KIRIBAKO.Co.,Ltd.

Rice Box

\$ 70

A simple and warm rice bin made by Masuda Paulownia Box, a long-established paulownia box maker. Breathable paulownia wood and persimmon tannins, which increase durability, protect rice from humidity, temperature, insects, and oxidation.

Web : <https://kiribako.jp/>

Language Availability: English, Chinese

Agent: ☒ Yes ☐ INCLUSIVE: ☒ Yes ☐ EXCLUSIVE: ☐ No]

Export Record: MORE THAN 3 YEARS

Export Destination: USA, Taiwan, 10country



WEST3-T34-06

HYOZAEMON CO., LTD

Dishwasher-safe chopsticks Cherryblossom

\$ 17.00

Dishwasher-safe chopsticks with beautiful mother-of-pearl inlay in the shape of cherry blossom petals. The design of cherry blossoms, a symbol of Japan, is popular among men and women of all ages and is a best-selling product of Hyozaemon. There is a total assortment of 10 SKUs in two sizes (23.5 cm and 21.5 cm) and 10 colors.

Web : <https://www.hyozaemon.co.jp/>

Language Availability: Japanese, English

Agent: ☐ No ☐ INCLUSIVE: ☐ No ☐ EXCLUSIVE: ☐ No]

Export Record: MORE THAN 3 YEARS

Export Destination: U.S.A., Canada, China, Taiwan, Vietnam, Singapore, U.K., France



EAST4-T06-21

MORITASHIKKI CO., LTD.

Sake Cup Mt.Fuji Blue

\$ 52

This sake cup, crafted using 450-year-old Yamanaka lacquerware techniques, is shaped like Mt. Fuji. Made from Japanese cherry birch and finished with urethane and Urushi lacquer, it's incredibly light with a thin rim for a smooth mouthfeel. Flip it upside down to reveal a snow-capped Mt. Fuji. A perfect gift or table accent. Also available in red. Size: Φ 7.7 × H 5cm / Specifications: Paper gift box

Web : <https://urusi.jp/>

Language Availability: English

Agent: ☐ No ☐ INCLUSIVE: ☐ No ☐ EXCLUSIVE: ☐ No]

Export Record: 1-3 YEARS

Export Destination: Hong Kong, France, Singapore, Malaysia, U.S.A.



WEST4-T49-16

NAGAO Co., Ltd.

Japanese Style spoon and fork

\$ 10

The handle is wrapped in rattan

Web: www.n-nagao.co.jp/

Language Availability: Japanese only

Agent: ☐ No ☐ INCLUSIVE: ☐ No ☐ EXCLUSIVE: ☐ No ☐]

Export Record: NONE

Export Destination:



WEST3-T32-18

Ohashi Ryoki Co., Ltd.

Masu Mug

\$ 30

We are a manufacture specializing in Masu which is Japanese traditional wooden cups. The traditional Masu making techniques are applied to make this wooden mug. There is a hole in the handle, so that it fits comfortably in your hand. You can use it for hot drinking because it is less likely to transfer heat.

Web: <http://www.ohashiryoki.com/index.html>

Language Availability: Japanese, English

Agent: ☐ No ☐ INCLUSIVE: ☐ No ☐ EXCLUSIVE: ☐ No ☐]

Export Record: MORE THAN 3 YEARS

Export Destination: USA, Taiwan, Hong Kong, UK, Singapore, France



WEST3-T34-06

SOUMEI LACQUERWARE CO., LTD.

Kyutarou BLUE

\$ 10~210 (Price varies by item.)

Blue has long been seen as unsuitable for food, but we questioned that idea. This series was born to challenge it. Traditional lacquerware hides the wood, but we used semi-transparent urethane lacquer to reveal both wood and finish. The coating is food-safe, with over 50 years of history, and is commonly used in restaurant tableware.

Web: <https://www.shikki-qtarou.com/>

Language Availability: Japanese only

Agent: ☐ No ☐ INCLUSIVE: ☐ No ☐ EXCLUSIVE: ☐ No ☐]

Export Record: 1-3 YEARS

Export Destination: AUSTRALIA, UK, KOREA, USA



WEST2-T17-16

SWEETS CRAFT

Mt.FUJI motif tableware

About \$7 to &28

Mt.FUJI motif which is "Colorful + Cute" won the Intensive Award at the Souvenir Grand Prix selected by the Japan Tourism Agency. They are available in a wide variety of shapes such as Cups, Bowls, Mug, Plates and each item have many colors. In addition, they are thin, light and stackable as well as using high-quality "white porcelain".

Web: <https://sweets-craft.com> (<http://sweets-craft.co.jp>)

Language Availability: English

Agent: ☐ No ☐ INCLUSIVE: ☐ No ☐ EXCLUSIVE: ☐ No ☐]

Export Record: MORE THAN 3 YEARS

Export Destination: TAIWAN, SINGAPORE, USA, HONG KONG ETC.



WEST1-AC-44

TAN GETSU/KAJIKOBO HIROMITSU

TANGETSU

\$ 95 \$ ~

The Distinction of True Craftsmanship

Each pan reveals a one-of-a-kind texture, formed naturally in the forging process. Iron transforms into something warm, expressive, and full of character. It apart from the countless mass-produced items in the market — not just a tool, but a work of art. This is cookware with the soul of a handcrafted masterpiece.

Web : <https://tangetsu.net>

Language Availability: English/Japanese

Agent: ☐ No 【 INCLUSIVE: ☐ No EXCLUSIVE: ☐ No 】

Export Record: 1-3 YEARS

Export Destination: North America

INTERIOR & DÉCOR



EAST6-T26-11

AIMEDIA

90-days anti-mold deodorizing fragrance

\$ 7.5

Prevents mold growth with a naturally derived fragrance. Prevents mold growth for approximately 90 days by simply placing it in areas of concern. (*Effectiveness depends on usage conditions.) For locations prone to mold growth, such as baths, closets, clogs, etc.

Web : https://shop.aimedia.co.jp/shop/shopdetail.html?brand_code=000000000686&search=%CB%C9%A5%AB%A5%D3%A5%D5%A5%EC%A5%B0%A5%E9%A5%F3%A5%B9&sort=

Language Availability: English, Chinese

Agent: ☒ Yes ☐ INCLUSIVE: ☒ Yes EXCLUSIVE: ☐ No]

Export Record: LESS THAN 1 YEAR

Export Destination: Taiwan, Hong Kong, Singapore, Malaysia



EAST7-T33-42

alamode CO., LTD.

OEM.ODM.Towel, stuffed toy,bag,

\$ 30

Event and Concert Goods Planning and Production
Products: Apparel (T-shirts, Sweatshirts, and etc.), Towels, Bags, Stuffed Toys, Keychains, Stationaries, Accessories, and etc. For towels, our partner factory is one of the largest towel factory in the industry which allows us to outperform other companies in terms of cost and delivery time. Please contact us.

Web : <https://alamode.co.jp/>

Language Availability: English

Agent: ☐ No ☐ INCLUSIVE: ☐ No EXCLUSIVE: ☐ No]

Export Record: 1-3 YEARS

Export Destination: USA, KOREA



WEST1-AC-52

Bandc

Bandc Basket

\$ 149

Bandc Basket is a storage basket handcrafted from washi paper bands—an ethical material recycled from milk cartons. Timeless and durable, it brings warmth and simplicity to modern life. Its foldable design enables flat storage, making it functional and space-saving. A sustainable, elegant choice for daily organization and conscious living.

Web : <https://www.bandc.co.jp/en/>

Language Availability: English

Agent: ☐ No ☐ INCLUSIVE: ☐ No EXCLUSIVE: ☐ No]

Export Record: LESS THAN 1 YEAR

Export Destination: U.S.A.



WEST1-T02-16

Buhne Table Lamp/Mintage Inc.

Bühne Table Lamp

\$ 180-185 *Prices vary depending on body size

This product is an LED table lamp designed and developed in Japan. It has a simple and modern design with a unique arm shape. The structure illuminates the light from directly above without glare, reliably illuminating the hand. It is rechargeable, so it is easy to carry and can be used in a wide range of situations anywhere.

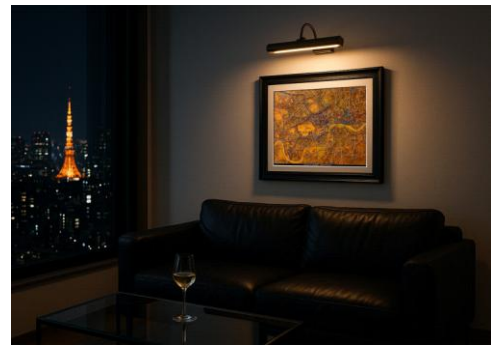
Web: <https://www.mintage.co.jp/>

Language Availability: English

Agent: ☐ No ☒ INCLUSIVE: ☐ No ☐ EXCLUSIVE: ☐ No ☐]

Export Record: NONE

Export Destination:



WEST4-T46-03

CRAFT HOUSE

MAP ART

\$ 700

The one and only MAP ART
City lines carry memory and time.
MAP ART turns maps into layered artwork.
Nine layers trace roads, rails, subways.
Each overlaps in color and depth.
A city becomes a vivid landscape.
Not just a map, but a new art form.
Quiet. Expressive.
This is MAP ART.

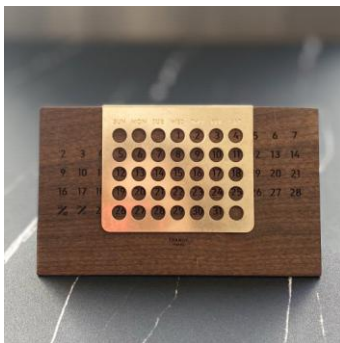
Web: <https://crafthousemapart.square.site/>

Language Availability: English

Agent: ☐ No ☒ INCLUSIVE: ☐ No ☐ EXCLUSIVE: ☐ No ☐]

Export Record: NONE

Export Destination:



WEST1-T08-21

DIARGE

DESKTOP ETERNAL CALENDAR 13908 GD

\$ 64.3

A perpetual calendar made by walnut with a brass hook plate. The beautiful grain and color of the walnut is complemented by the deep texture of the moderately rough brass, which indicates the time. This product functions as a semi-permanent calendar and has a presence as a desktop accessory, allowing you to enjoy the changes that occur over time.

Web: <https://store.diarge.com>

Language Availability: Japanese, English

Agent: ☒ Yes ☒ INCLUSIVE: ☒ Yes ☐ EXCLUSIVE: ☐ No ☐]

Export Record: LESS THAN 1 YEAR

Export Destination: LUXEMBOURG, KOREA, CHINA



WESTAT-FP-43

HakuRe/HIROTA GLASS

Milky Glass

\$ 50

In the 1980s, Hirota Glass managed to resurrect the opalescent-colored glassmaking technique through trial and error, and used it to produce the most widely popular glass during the Taisho period. Hirota Glass successfully designed and produced the "Taisho Roman Series" using this technique.

Web: <https://hirota-glass.co.jp/eng/>

Language Availability: English, Chinese

Agent: ☒ Yes ☒ INCLUSIVE: ☒ Yes ☐ EXCLUSIVE: ☐ No ☐]

Export Record: MORE THAN 3 YEARS

Export Destination: US, CHINA, EUPEAN



EAST4-T09-36

OKAZAKISEIZAI CO., LTD.

cuttingboard mini keyaki

\$ 14

Discover the elegance of Japanese woodworking with our handcrafted cutting board made from premium Zelkova (Keyaki) wood. Known for its stunning grain patterns and exceptional durability, Zelkova has been cherished in Japan for centuries—used in temples, traditional homes, and artisan furniture.

Web : <https://www.okazaki-seizai.co.jp/>

Language Availability: japanese

Agent: ☐ No ☐ INCLUSIVE: ☐ No ☐ EXCLUSIVE: ☐ No ☐]

Export Record: MORE THAN 3 YEARS

Export Destination: Singapore



WESTAT-FP-27

PORT

TRAY 「ANYTIME, ANYWHERE」

\$ 23

“ANYTIME, ANYWHERE” is a tray designed to fit effortlessly into your lifestyle. Use it by the door for your keys, on your bedside table for jewelry and watches, or even to display air plants if you're a plant lover. It's a tray for anything, anytime, anywhere.

Web : www.critiba.com

Language Availability: Japanese

Agent: ☐ No ☐ INCLUSIVE: ☐ No ☐ EXCLUSIVE: ☐ No ☐]

Export Record: NONE

Export Destination: NONE



EAST6-T26-04

Seishoku Co., Ltd.

KOKESHI DOLL

\$ 59.12

Our company was founded in 1880 in Kurashiki city as a textile manufacturing company.

Currently, we dye a variety of fabrics at our Okayama factory, one of the largest dyeing factories in western Japan.

The Nunous division uses new upcycling methods to make the large amounts of non-standard fabric that are generated during production look beautiful.

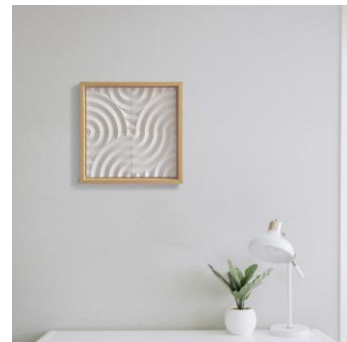
Web : <https://nunous.jp/>

Language Availability: English

Agent: ☒ Yes ☐ INCLUSIVE: ☒ Yes ☐ EXCLUSIVE: ☐ No ☐]

Export Record: 1-3 YEARS

Export Destination: France



WEST3-T38-04-D

Terrawell/Kano Co., Ltd.

Terrawell

\$ 230

We are a tile manufacturer, and Terrawell is a non-burning tile developed to reduce CO2 emissions. In addition, it has deodorizing and humidity control functions. (Patented) We have made it into an art frame so that it can be framed and displayed as an easy interior decoration. Terrawell is an earth- and people-friendly product.

Web : <https://www.kano.co.jp/>

Language Availability: Japanese

Agent: ☐ No ☐ INCLUSIVE: ☐ No ☐ EXCLUSIVE: ☐ No ☐]

Export Record: NONE

Export Destination:



WEST2-T20-13

TOSEI-TRADING CO., LTD.

KUMIKO Craft Products

\$ 10.00~

"Art for Everyday."

KUMIKO craft is a traditional Japanese craft that dates back to the Asuka period. Using no nails or adhesives, artisans carefully join wooden pieces to create intricate geometric patterns.

The light and shadow that filter through KUMIKO patterns paint an artful ambiance in any room, lending an elegant and serene atmosphere.

Web : <https://www.tosei-trading.co.jp/business/ts-kumiko/>

Language Availability: Japanese, English, Chinese

Agent: ☐ No ☐ INCLUSIVE: ☐ No ☐ EXCLUSIVE: ☐ No ☐]

Export Record: MORE THAN 3 YEARS

Export Destination: USA, CHINA, KOREA, SINGAPORE, etc.



WESTAT-FP-46

WATANABE PILE

Towel, Blanket, Baby&Kids item

\$ 15~200

The company was founded in 1963 in Ehime Prefecture. The passionate craftsmanship inherited from the first generation, "We would like to create towels that have never existed before," still lives on in every single step of the towel-making process. In addition to "weaving," the company continues to challenge new possibilities for everyday towels by visiting cotton-producing regions and holding discussions with craftspeople from the spinning process, including those who are involved in twisting, dyeing, sewing and the like, to maximize the quality of the material.

Web : <https://www.watanabe-pile.jp>

Language Availability: English

Agent: ☐ No ☐ INCLUSIVE: ☐ No ☐ EXCLUSIVE: ☐ No ☐]

Export Record: MORE THAN 3 YEARS

Export Destination: America, Taiwan

FASHION & ACCESSORY



WEST3-T33-13

AMUSE co., ltd.

accessories

\$ approximately 10-20 USD

We have a wide variety of Japanese-themed products. These accessories are carefully produced one by one at our atelier in Tokyo. We hope that you can feel the Japanese tradition, culture, and materials that have been passed down through Junintowa's accessories.

Web : <https://www.junintowa.com/>

Language Availability: English ※We use translation sites.

Agent: ☐ No 【 INCLUSIVE: ☐ No EXCLUSIVE: ☐ No 】

Export Record: 1-3 YEARS

Export Destination: England, France, Australia, America, Taiwan, HongKong



WEST1-GLS-10

AMVEL

UMBRELLA

\$ 30~60USD

AMVEL is an umbrella brand founded in 2016. With the mission of "make rainy & sunny days comfortable", we are developing products centered on functional umbrellas. We believe that verification of durability that can be used for as long as possible, selection of materials, and use of less toxic dyes and water repellents are also the core of product creation.

Web : <https://www.umbrella-store.net/>

Language Availability: CHINESE, ENGLISH

Agent: ☐ No 【 INCLUSIVE: ☐ No EXCLUSIVE: ☐ No 】

Export Record: MORE THAN 3 YEARS

Export Destination: HONG KONG, TAIWAN, CANADA



EAST5-T18-18

Atelier Kinako

100% cotton gauze wear Made in japan

\$ 104

kinako makes everyday clothes from soft gauze, inspired by the calm sea of Setouchi. Made slowly and gently in Japan, our pieces are kind to your skin and easy to care for. With simple designs and a relaxed fit, they're made to move with you—through busy days, quiet moments, and everything in between.

Web : www.kinako.gr.jp

Language Availability: japanese

Agent: ☐ No 【 INCLUSIVE: ☐ No EXCLUSIVE: ☐ No 】

Export Record: NONE

Export Destination:



EAST5-T15-18

BIKEN TEXTILE CO., LTD. Fabric Accessories OEM

Gamaguchi-Pouch

\$ 29.5

We dye and process apparel fabrics in Kyoto. Instead of the traditional auto-screen dyeing, we use ink-jet dyeing, which has less impact on the environment during the dyeing process. This method uses 95% less water than traditional dyeing methods. This is a high-quality gamauchi pouch printed at our own factory. We also offer OEM services.

Web: <https://bikenseni.co.jp/asobi-gokoro/>

Language Availability: Japanese, English

Agent: ☐ No ☐ INCLUSIVE: ☐ No ☐ EXCLUSIVE: ☐ No ☐]

Export Record: LESS THAN 1 YEAR

Export Destination: USA, UK



EAST5-T15-38

caumeri YAGIHYO CO., LTD.

Japan's BtoB mall

Caumeri is a B2B (business-to-business) wholesale and purchasing site that connects sellers and buyers.

Buyers can purchase products from various sellers at wholesale prices.

Web: <https://caumeri.com/>

Language Availability: ENGLISH & CHINESE

Agent: ☐ No ☐ INCLUSIVE: ☐ No ☐ EXCLUSIVE: ☐ No ☐]

Export Record: NONE

Export Destination:



WEST3-T34-05

Eri no Erihide

Shoulder bag with kimono accessories

\$ 1,000

Experience the refined elegance of Japan with this luxury shoulder bag, crafted from pure silk haneri (kimono collar) and fine leather. Featuring intricate embroidery of Fujin and Raijin—the revered gods of wind and thunder—it blends traditional and modern together. A Kyoto brand accessory for VIP buyers who value Japanese culture and true craftsmanship.

Web: <https://www.erihide.jp/>

Language Availability: Chinese, English

Agent: ☐ No ☐ INCLUSIVE: ☐ No ☐ EXCLUSIVE: ☐ No ☐]

Export Record: 1-3 YEARS

Export Destination: China



EAST5-MC08

FABRICE INC.

dress-onepiece

\$ 250

Fabrice delivers a "magical piece" that brings out your radiance, pursuing designs and quality that can be loved for a long time, unaffected by trends. Using carefully selected high-quality European fabrics, the garments are meticulously tailored in skilled Japanese factories, embodying both the elegance and comfort suitable for sophisticated adult women.

Web: <https://fabrice1978.com>

Language Availability: JAPANESE

Agent: ☒ Yes ☐ INCLUSIVE: ☒ Yes ☐ EXCLUSIVE: ☐ No ☐]

Export Record: LESS THAN 1 YEAR

Export Destination: China



WEST2-T14-03

KIMONO ISHIHARA

denim kimono ai-iro

\$ 816

Denim kimonos made in Kochi in collaboration with Jeans koubou Ohgata (Kuroshio Town), which handles denim sewing for famous brands such as Ishihara. Denim is a classic casual item loved all over the world. "Denim kimono -ai-iro-" is a real clothes that can be worn casually as usual coordination like a dress or setup.

Web: <https://gofuku-ishihara.com>

Language Availability: Japan

Agent: ☐ No ☒ INCLUSIVE: ☐ No ☐ EXCLUSIVE: ☐ No ☐]

Export Record: NONE

Export Destination:



EAST6-T22-16

KIZAWA

ULTRA-LIGHTWEIGHT SUNBLOCK MINI PARASOL

\$ 25

This is an ultra-lightweight and highly functional folding umbrella with a 100% UV shielding rate that also completely blocks sunlight. Weighing only about 130g, it won't be a burden at all even if you carry it with you every day. Moreover, it is water-repellent, making it suitable for both sunny and rainy days.

Web: <https://kizawa-corp.com/>

Language Availability: English, Chinese

Agent: ☒ Yes ☐ INCLUSIVE: ☐ No ☐ EXCLUSIVE: ☒ Yes ☐]

Export Record: LESS THAN 1 YEAR

Export Destination: KOREA



WEST3-T33-11

mile

TRADITIONAL SHEER HAPPI

\$ 138

Inspired by traditional Japanese kimono, this modern happi jacket is made from a lightweight sheer polyester that resembles the texture of tsumugi silk—traditionally worn in Japan during summer. Machine-washable and easy to care for, it blends tradition with practicality. A popular item among overseas customers at both our physical and online stores.

Web: <https://store.find-myjapan.com/>

Language Availability: English, Chinese, French

Agent: ☐ No ☒ INCLUSIVE: ☐ No ☐ EXCLUSIVE: ☐ No ☐]

Export Record: NONE

Export Destination:



WEST3-T33-15

nagomi

Hair Accessories

\$ 3.3~16.6 (¥ 500~ ¥ 2800)

We manufacture products using traditional Japanese weaving techniques and our unique technology. We combine traditional beauty with modern design to achieve the warmth and high quality that only handcrafted products can offer. We also specialize in small lot production and a wide variety of products.

Web: https://www.instagram.com/nagomi_2019/?hl=ja

Language Availability: Japanese

Agent: ☐ No ☒ INCLUSIVE: ☐ No ☐ EXCLUSIVE: ☐ No ☐]

Export Record: LESS THAN 1 YEAR

Export Destination: CHINA



WEST1-T08-19

nanayosha

Handmade porcelain jewellery

\$ 50

"Nanayosha" is a Japanese tile brand that proposes new ways to enjoy tiles. Tiles have always been a beautiful addition to buildings and spaces. Now it has been transformed into a porcelain jewelry for the people. All of our jewelry is handmade and fired by experienced and passionate craftsmen in the Mino ware region of Tajimi, Gifu Prefecture.

Web : <https://en.nanayosha.com/>

Language Availability: English, Japanese

Agent: ☐ No ☐ INCLUSIVE: ☐ No ☐ EXCLUSIVE: ☐ No]

Export Record: MORE THAN 3 YEARS

Export Destination: France, Switzerland, Belgium, USA, Australia, The Netherlands etc.



WEST3-T36-01

noan

Keychain, Mini-scissors, Magnet

Keychain(\$ 15) Scissors(\$ 14) Magnet(\$ 13)

Our keychains are crafted using Nishijin-ori, a traditional Kyoto textile with over 1,200 years of history. Razor-sharp mini scissors, safe for carry-on luggage. Made by skilled craftsmen in Seki City, famous for its blades. We also make magnets using Nishijin-ori fabric. Each one is unique, so you can enjoy finding your favorite.

Web : <https://yumitoru.jp/>

Language Availability: English

Agent: ☐ No ☐ INCLUSIVE: ☐ No ☐ EXCLUSIVE: ☐ No]

Export Record: LESS THAN 1 YEAR

Export Destination: USA, FRA ,MYS ,UAE, AUS, SG,



WEST3-T35-12

ORGANIC COTTON SIGN

WASHABLE OJO(Japan Paper) HAND KNIT HAT

\$ 60

Extremely lightweight
Washable with strong water resistance
Highly absorbent and quick-drying
Stiffer and crisper than linen
Cooling effect for summer clothing
Made from fast-growing Manila hemp Excellent carbon dioxide absorption
Grown without chemical fertilizers or pesticides
Biodegradable
Burns cleanly without releasing harmful substances.

Web : <https://www.canal-sign.com>

Language Availability: ENGLISH

Agent: ☐ No ☐ INCLUSIVE: ☐ No ☐ EXCLUSIVE: ☐ No]

Export Record: LESS THAN 1 YEAR

Export Destination: TAIWAN, SINGAPORE, CHINA, KOREA



EAST5-T15-28

pack all & banana trip

Shoe Bag, Water-Resistant, Light Weight

\$ 13.99

This bag made of superb Polyester + TPU composite mesh material, the material is water-resistant to help prevent your pouch from water splash. Bright color and translucent mesh design.
It keeps your shoes away from dust, isolates odors and prevents stains. Suitable for family use and traveling to carry.

Web : <https://www.packall.co.jp/>

Language Availability: Japanese, English, Chinese

Agent: ☐ No ☐ INCLUSIVE: ☐ No ☐ EXCLUSIVE: ☐ No]

Export Record: MORE THAN 3 YEARS

Export Destination: USA



EAST6-T21-15

PAN CREATION CO.,LTD

Jacquard bag (Ladies)

\$ 30~60

For 60 years since our establishment, we have been committed to quality-oriented manufacturing with a focus on products made in Japan. We design original patterns and make bags using fabrics expressed in traditional Japanese textiles such as Kiryu-ori, Bishu-ori, and denim jacquard from Okayama Prefecture. In addition to the original design patterns, our bags are lightweight, carefully sewn, and made in Japan. We are a manufacturer of ladies' bags utilizing the characteristics of Jacquard weave fabrics.

Web: <http://pancreation.jp/index.html>

Language Availability: Almost Japanese

Agent: ☐ No ☐ INCLUSIVE: ☐ No ☐ EXCLUSIVE: ☐ No]

Export Record: LESS THAN 1 YEAR

Export Destination: Taiwan



WEST1-AC-03

Ren Yamakawa/HAVE A GOOD DAY

HAVE A GOOD DAY

\$ 23

"Patches Diary" is a personal project by graphic designer and illustrator Ren Yamakawa, who turns moments from their own life into embroidered patch stories.

Web: <https://storegoodday.thebase.in/>

Language Availability: Japanese, English

Agent: ☐ No ☐ INCLUSIVE: ☐ No ☐ EXCLUSIVE: ☐ No]

Export Record: LESS THAN 1 YEAR

Export Destination: USA



WEST1-AC-43

SAKASO

Kutani ware and embroidery earrings

\$ 27~39

Wear the essence of Japanese craftsmanship. These earrings combine Kutani porcelain from Ishikawa, each delicately kiln-fired, with embroidered rings made in Kiryu, Gunma. A fresh take on traditional crafts, they are elegant and surprisingly light—easy to wear and rich in cultural charm.

Web: <https://sakaso.shopinfo.jp>

Language Availability: English

Agent: ☐ No ☐ INCLUSIVE: ☐ No ☐ EXCLUSIVE: ☐ No]

Export Record: LESS THAN 1 YEAR

Export Destination: Australia, Hong Kong



WEST3-T34-06

SHUYU CO., LTD.

DEEC Imola

\$ 510

D-DRIVE, E-ENRICH, E-ENJOY, C-COMFORT. Deek is a driving sunglasses brand born from the fusion of these four elements.

All products, from frames to lenses, are produced in our own factory.

Imola is an original high-end model that uses a solid titanium frame carved from a single titanium plate, achieving high robustness and a silhouette with a calm fit.

Web: <https://deec.jp/>

Language Availability: English

Agent: ☐ No ☐ INCLUSIVE: ☐ No ☐ EXCLUSIVE: ☐ No]

Export Record: MORE THAN 3 YEARS

Export Destination: HONG KONG



WEST1-AC-26

tamaoworld

Hand-Embroidered Cat Face Leather Wallet

\$ 90

Each wallet features a hand-embroidered cat face, carefully stitched onto soft sheep leather. The design is developed by our Japanese designer, with production carried out in India by skilled artisans. Blending detailed craftsmanship and playful charm, this unique piece is perfect for cat lovers and quality-seekers alike.

Web : <https://tamao-world.com>

Language Availability: English

Agent: ☐ No ☒ INCLUSIVE: ☐ No ☐ EXCLUSIVE: ☐ No ☐]

Export Record: MORE THAN 3 YEARS

Export Destination: Hong Kong, Taiwan



EAST6-T22-01

V.D.L.C.

Japanese Canvas bag

Around \$35 – 110

In cooperation with a Japanese canvas weaving manufacturer, we process and dye the fabric to produce bags. We insist on manufacturing in Japan, and all sewing is done in-house. Our original brand "V.D.L.C." offers 34 types of lightweight, soft, washable bags in various combinations. We also release three limited edition colors every two seasons.

Web : <https://vdlc-komanogu.com/>

Language Availability: Japanese

Agent: ☐ No ☒ INCLUSIVE: ☐ No ☐ EXCLUSIVE: ☒ Yes ☐]

Export Record: LESS THAN 1 YEAR

Export Destination: CHINA, TAIWAN, AUSTRALIA

HEALTH & BEAUTY



WEST1-T07-10

HORIUCHI MIRROR

Make-Up Mirror series

\$ 10~

HORIUCHI MIRROR is a special mirror patented in Japan and reflects your real appearance owing to its structure. Clearly reflected skin color teaches the best foundation color to users and enables greatly improved makeup. Thus, HORIUCHI MIRROR is accepted not only by consumers but also by professionals in the beauty industry.

Web : <https://www.cr-horiuchi.co.jp/>

Language Availability: English

Agent: ☐ No ☐ INCLUSIVE: ☐ No ☐ EXCLUSIVE: ☐ No ☐]

Export Record: MORE THAN 3 YEARS

Export Destination: USA, CHINA, TAIWAN, HONG KONG, INDONESIA



EAST5-FS01

maruichi-knit do., ltd.

Recovery Yoga mat

\$ 40

The World's First Yoga Mat with Innovative Japanese Technology
Made from a hybrid of EVA (ethylene-vinyl acetate copolymer) and rubber, this ultra-lightweight mat delivers exceptional grip through natural rubber. Ranked No.1 in Japan for 3 consecutive years, outperforming global brands. Overseas sales to begin this year.

Web : <https://wehub.jp/pages/styleboatmarket-top>

Language Availability: English

Agent: ☐ No ☐ INCLUSIVE: ☐ No ☐ EXCLUSIVE: ☐ No ☐]

Export Record: LESS THAN 1 YEAR

Export Destination: United States



EAST4-T07-43

NIOCAN/DKS Co. Ltd.

NIOCAN

\$ 20 per bottle

NIOCAN: A professional deodorizing product developed by our olfactory measurement operator.
What are remarkable about NIOCAN?
1. Cancels out bad smells with the original blend of 9 natural essential oils
2. Very safe, very low irritation *Skin and eye irritation tested
3. Applicable to all kinds of smells around our daily life while sterilizing

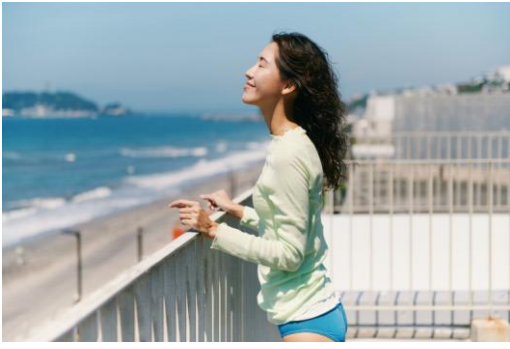
Web : <https://niocan.jp/english/>

Language Availability: ENGLISH

Agent: ☐ No ☐ INCLUSIVE: ☐ No ☐ EXCLUSIVE: ☐ No ☐]

Export Record: LESS THAN 1 YEAR

Export Destination: Taiwan



WEST2-T18-27

SISIFILLE

SISIFILLE

\$ 5.08

We have been manufacturing “face to face” products for about 40 years, using only organic cotton that is clearly identified as having been grown by whom, where, and how. Our private brand “SISIFILLE” focuses on the effects of “softness” and offers sanitary napkins, underwear, and other items that soften both the body and mind.

Web : <https://sisifille.com>

Language Availability: Japanese, English

Agent: ☐ No 【 INCLUSIVE: ☐ No EXCLUSIVE: ☐ No 】

Export Record: NONE

Export Destination:

FOOD & BEVERAGE



EAST4-T03-PF07

KAKEGAWA IPPUDO CO., LTD.

Japanese Four Seasons with Fruits Matcha

\$ 100

Fruit Matcha gift set with four different flavors representing the four seasons of Japan.

Web : <https://ippudou.com/>

Language Availability: Japanese

Agent: ☐ No ☐ INCLUSIVE: ☐ No ☐ EXCLUSIVE: ☐ No]

Export Record: LESS THAN 1 YEAR

Export Destination: U.S.A., U.K., Malaysia



EAST4-T06-24

KAWASHIMA COFFEE CO.,LTD.

JAPAN coffee

\$ 3.5

Discover refined elegance with our JAPAN Coffee series, inspired by iconic ukiyo-e masterpieces—Red Fuji, The Wave, and The River. Each cup offers a smooth, mellow flavor with restrained acidity, echoing the timeless beauty of traditional Japan. Crafted to evoke tranquil moments and cultural richness, this coffee invites you to savor the essence of a graceful journey through Japan's storied landscapes.

Web : <https://www.kawashimacoffee.co.jp/>

Language Availability: English

Agent: ☐ No ☐ INCLUSIVE: ☐ No ☐ EXCLUSIVE: ☐ No]

Export Record: MORE THAN 3 YEARS

Export Destination: China, Korea, Hong Kong, Germany, England, US



EAST4-T04-18

MOTHERHOUSE CO.,LTD.

IRODORI CHOCOLATE

\$ 9.49

"IRODORI CHOCOLATE," inspired by Japan's four seasons, is crafted with unbleached, undeodorized cacao butter to preserve its rich, natural aroma. Using Motherhouse's original blend, this white chocolate is infused with natural ingredients for both flavor and color, resulting in a visually stunning and delicious gradient.

Web : <https://www.motherhouse.co.jp/pages/littlemotherhouse>

Language Availability: Japanese

Agent: ☐ No ☐ INCLUSIVE: ☐ No ☐ EXCLUSIVE: ☐ No]

Export Record: 1-3 YEARS

Export Destination: Taiwan



EAST4-T01-51

TAIYO CO.,LTD.

Japanese danish bread

\$ 10

The fluffy texture and subtly sweet bread are perfect for breakfast or snacks!
--

Web : <http://www.ise-taiyou.co.jp/>

Language Availability: JAPANESE, KOREAN

Agent: ☐ No 【 INCLUSIVE: ☐ No EXCLUSIVE: ☐ No 】

Export Record: MORE THAN 3 YEARS

Export Destination: USA,THAILAND,UK,TAIWAN,KOREA

OTHER



WEST3-T35-12

egret

Wireless Mouse with Cubic Zirconia Button

\$ 30~40

A wireless mouse featuring a brilliant cubic zirconia button that rivals the sparkle of real gemstones. Choose from 12 birthstone-inspired colors to match your style. Paired with a pearl white body, this luxurious design makes it a perfect gift for someone special. This product was selected as a Tokyo Representative Item in the 2024 OMOTENASHI Selection,

Web : <https://www.egret-jp.com/>

Language Availability : English, Chinese, Japanese

Agent : ☐ No ☐ INCLUSIVE : ☐ No ☐ EXCLUSIVE : ☐ No ☐]

Export Record : NONE

Export Destination :



WEST1-AC-30

MCKK

100% Natural incense

\$ 24

MCKK's incense is crafted on Awaji Island, the birthplace of Japanese incense culture. Made with only powdered wood and essential oils — 100% plant-based. Inspired by the Japanese sensibility of "listening to fragrance," lighting the incense becomes more than a moment of relaxation — it offers a quiet ritual to reflect and reconnect with yourself.

Web : <https://mckkip.com/>

Language Availability : English

Agent : ☐ No ☐ INCLUSIVE : ☐ No ☐ EXCLUSIVE : ☐ No ☐]

Export Record : NONE

Export Destination :



EAST4-T10-03

OKABE YOSHOKKI CO., LTD.

Kurukuru Vegetable Slicer

\$ 25

Easily slices vegetables by turning like pencil sharpener. Slices can be made in julienne (coarse or fine), peeled into thin strips, etc. When using thin vegetables, use the attached special guide plate. A special push stick is also included in case vegetables become small. Safe for use by children. The dedicated stand allows for neat storage.

Web : <https://okabeyoshokki.co.jp/>

Language Availability : Japanese

Agent : ☐ No ☐ INCLUSIVE : ☐ No ☐ EXCLUSIVE : ☐ No ☐]

Export Record : 1-3 YEARS

Export Destination : HONG KONG, CHINA, USA, TAIWAN, UK



WESTAT-FP-39

PYYLE

PYYLE

USD20.00~USD90.00

Organic cotton towels made from herb dyed yarn that has been finished by only soap and enzymes. The herb dyed raw materials are logwood, indigo, coffee grounds, and wine pomace. We are the highest quality organic towel manufacturer in IMABARI, JAPAN.

Web : <https://www.plantia.co.jp>

Language Availability: English

Agent: ☐ No ☐ INCLUSIVE: ☐ No ☐ EXCLUSIVE: ☐ No]

Export Record: 1-3 YEARS

Export Destination: Korea, Netherland



WEST3-T33-20

SHINWA MUSIC KYOTO MAKI-E PIANO

Piano with Japanese traditional craft

\$ 22,000

"Kyoto Maki-e piano" is made using ethical jewelry, Kyoto Opal with the Kyoto traditional craft technique, Maki-e. It features a play-of-colour effect. Maki-e is a traditional technique of applying pictures and patterns to the surface of lacquerware using gold and silver powder. We have now started to produce that with traditional craft and new materials.

Web : <https://www.shinwamusic.com/makie-en/>

Language Availability: English

Agent: ☐ No ☐ INCLUSIVE: ☐ No ☐ EXCLUSIVE: ☐ No]

Export Record: MORE THAN 3 YEARS

Export Destination: CHINA, VIETNAM, CANADA, USA, UAE, SINGAPORE



EAST4-T06-21

UCHIKI CO.,LTD

Lacquer cup.Gold & silver leaf glass cup

\$ 30~

The lacquer cup is made from the highest quality 18-8 stainless steel (made in Japan) from Niigata, and the outside is finished with Yamanaka lacquer, a traditional craft from Ishikawa Prefecture. The cup also comes with a washi coaster, a traditional craft of Echizen City, Fukui Prefecture.

Web : <https://shi-moa.shop-pro.jp/>

Language Availability: Chinese.

Agent: ☐ No ☐ INCLUSIVE: ☐ No ☐ EXCLUSIVE: ☐ No]

Export Record: LESS THAN 1 YEAR

Export Destination: Hong Kong, Singapore, Taiwan, America, etc.



WEST3-T34-04

WAKUWAKU Inc.

Nekodaruma (Cat daruma)

\$ 22 (¥3,250)

"Nekodaruma" is a unique daruma doll by artist ai sayama, blending the traditional Takasaki Daruma with a cat motif. Daruma dolls symbolize perseverance and bring good luck. Four types are available: White, Red Happiness (with cherry blossoms), Black & Gold (with koban coins), and Kaminarimon (with fireworks), made with the Edo Taito Taiga Drama Museum.

Web : <https://wakuwakuart.com>

Language Availability: English, Chinese

Agent: ☐ No ☐ INCLUSIVE: ☐ No ☐ EXCLUSIVE: ☐ No]

Export Record: LESS THAN 1 YEAR

Export Destination: Taiwan

The 101st TOKYO INTERNATIONAL GIFT SHOW Spring 2026



LIFE x DESIGN 19th Edition
by TOKYO INTERNATIONAL GIFT SHOW

The 39th GOURMET SHOW Spring 2026



||| NEXT SHOW

February 4th-6th, 2026